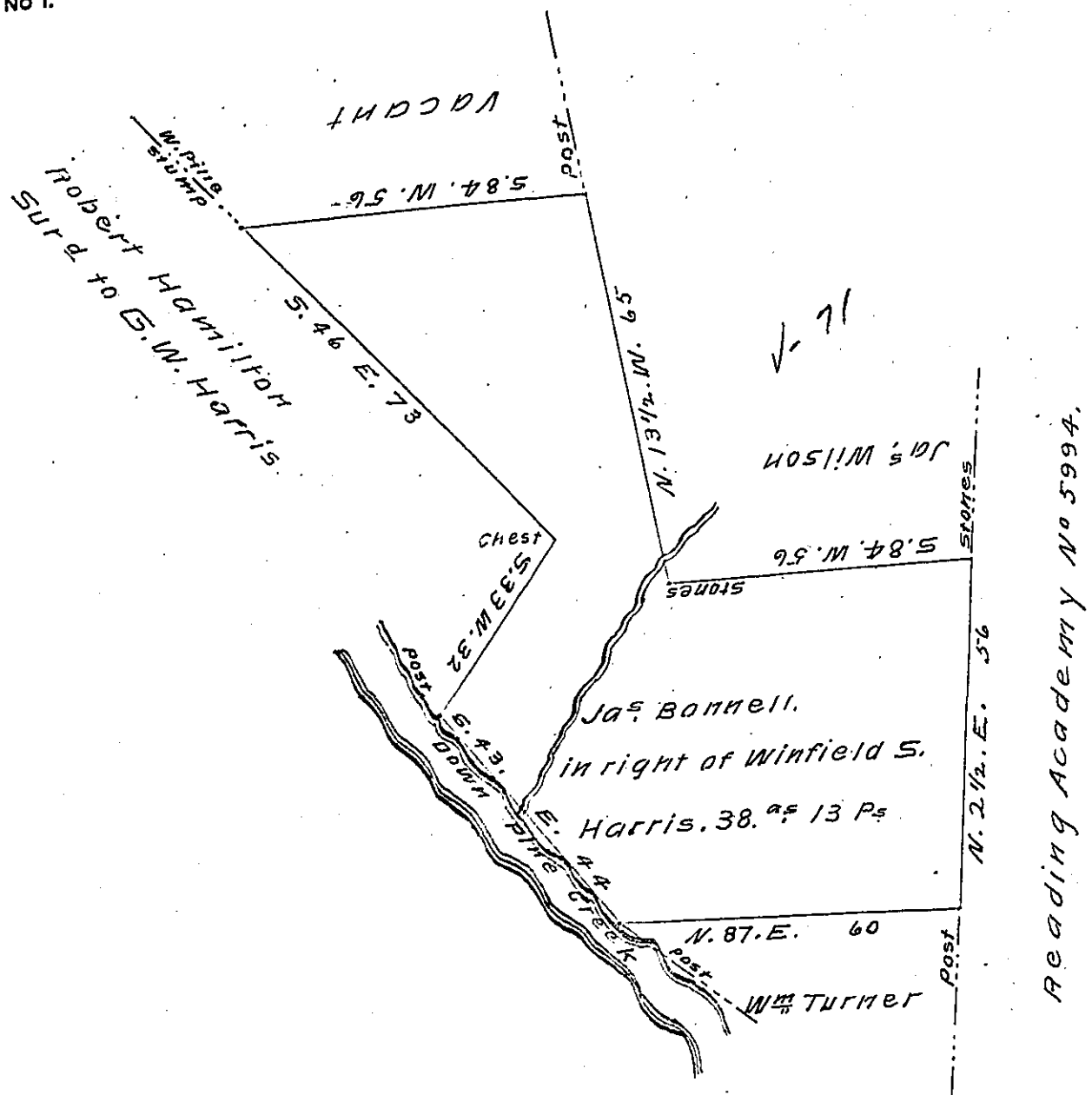


FORM NO 1.



Reading Academy No 5994.

Surveyed the above described tract of land containing Thirty eight acres and thirteen perches with allowance of six per cent for Roads &c. Situate on the East Side of Pine Creek in Gummings Township Lycoming County for James Bonnell on the 16<sup>th</sup> day of September A. D. 1875 in pursuance of a Warrant granted to Winfield S. Harris for Sixty acres of land on the 7<sup>th</sup> day of February A. D. 1865.

J.S. Laird Co. Surveyor

Hon William Mc Candless }  
 Secretary of Internal Affairs }

IN TESTIMONY that the above is a copy of the original remaining on file in the Department of Internal Affairs of Pennsylvania, made conformably to an Act of Assembly approved the 16th day of February, 1833, I have hereunto set my Hand and caused the Seal of said Department to be affixed at Harrisburg, this Nineteenth day of December 1907

*Henry Howck*  
 Secretary of Internal Affairs.